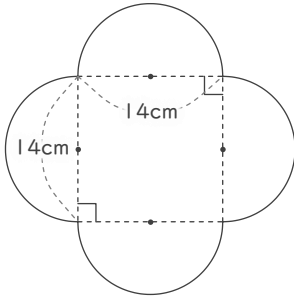


円を使った図形の面積

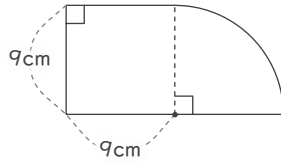
____年 ____組 名前 _____

■ 半円やおうぎ型、正方形を組み合わせてできている次の図形の面積を答えましょう。

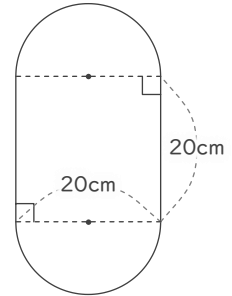
①



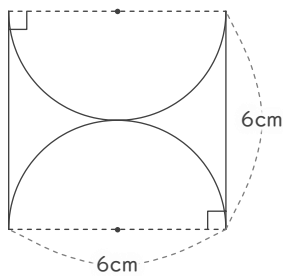
②



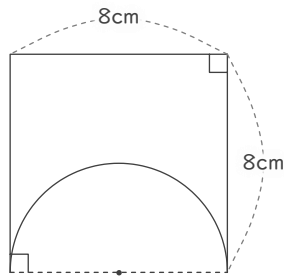
③



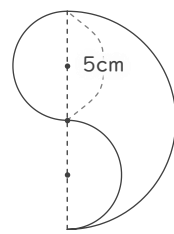
④



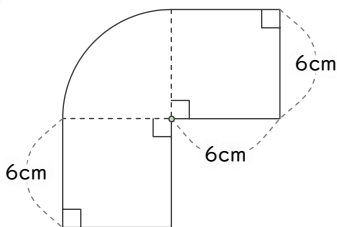
⑤



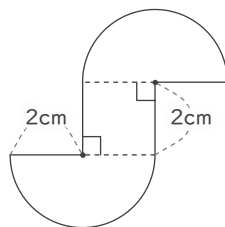
⑥



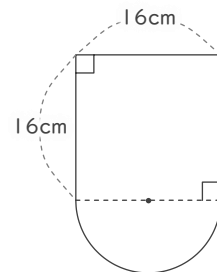
⑦



⑧



⑨



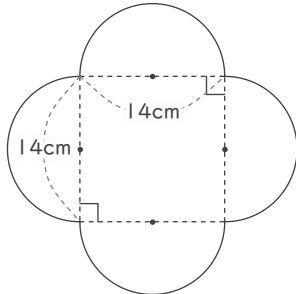
円を使った図形の面積

____年 ____組 名前 _____

19

■ 半円やおうぎ型、正方形を組み合わせてできている次の図形の面積を答えましょう。

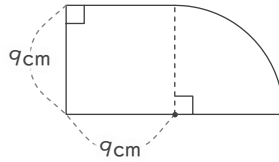
①



$$\begin{aligned} 7 \times 7 \times 3.14 \times 2 &= 307.72 \\ 14 \times 14 &= 196 \\ 307.72 + 196 &= 503.72 \end{aligned}$$

$$503.72 \text{cm}^2$$

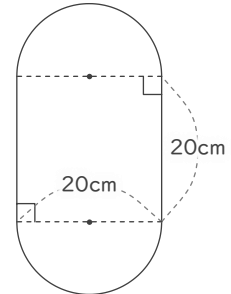
②



$$\begin{aligned} 9 \times 9 \times 3.14 \div 4 &= 63.585 \\ 9 \times 9 &= 81 \\ 63.585 + 81 &= 144.585 \end{aligned}$$

$$144.585 \text{cm}^2$$

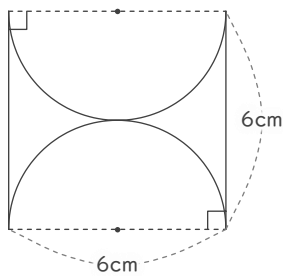
③



$$\begin{aligned} 10 \times 10 \times 3.14 &= 314 \\ 20 \times 20 &= 400 \\ 314 + 400 &= 714 \end{aligned}$$

$$714 \text{cm}^2$$

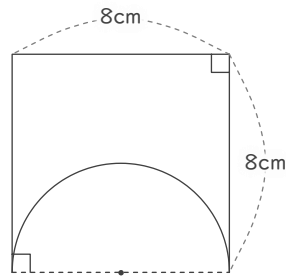
④



$$\begin{aligned} 6 \times 6 &= 36 \\ 3 \times 3 \times 3.14 &= 28.26 \\ 36 - 28.26 &= 7.74 \end{aligned}$$

$$7.74 \text{cm}^2$$

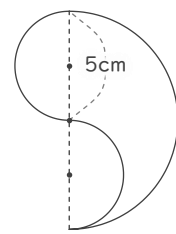
⑤



$$\begin{aligned} 8 \times 8 &= 64 \\ 4 \times 4 \times 3.14 \div 2 &= 25.12 \\ 64 - 25.12 &= 38.88 \end{aligned}$$

$$38.88 \text{cm}^2$$

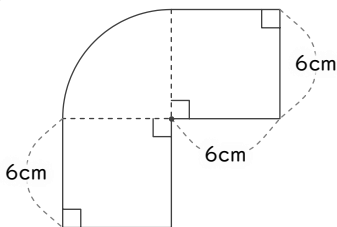
⑥



$$5 \times 5 \times 3.14 \div 2 = 39.25$$

$$39.25 \text{cm}^2$$

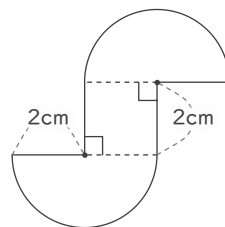
⑦



$$\begin{aligned} 6 \times 6 \times 3.14 \div 4 &= 28.26 \\ 6 \times 6 \times 2 &= 72 \\ 28.26 + 72 &= 100.26 \end{aligned}$$

$$100.26 \text{cm}^2$$

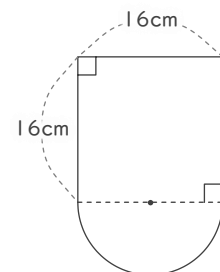
⑧



$$\begin{aligned} 2 \times 2 \times 3.14 &= 12.56 \\ 2 \times 2 &= 4 \\ 12.56 + 4 &= 16.56 \end{aligned}$$

$$16.56 \text{cm}^2$$

⑨



$$\begin{aligned} 8 \times 8 \times 3.14 \div 2 &= 100.48 \\ 16 \times 16 &= 256 \\ 100.48 + 256 &= 356.48 \end{aligned}$$

$$356.48 \text{cm}^2$$