

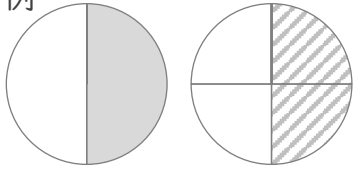
等しい分数

年 組 名前

/14

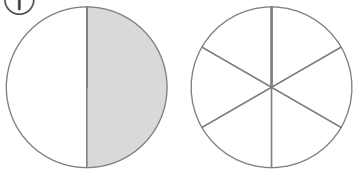
■ 例にならって、左の図と同じだけ右の図に色をぬり、等しい分数を考えましょう。

例



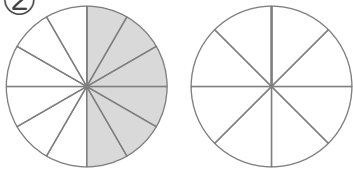
$$\frac{1}{2} = \frac{2}{4}$$

①



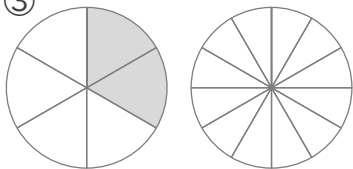
$$\frac{1}{2} = \square$$

②



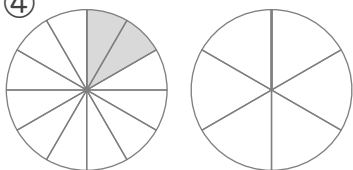
$$\frac{6}{12} = \square$$

③



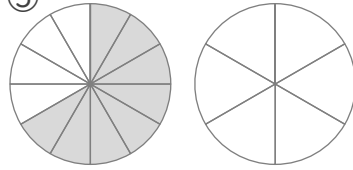
$$\frac{2}{6} = \square$$

④



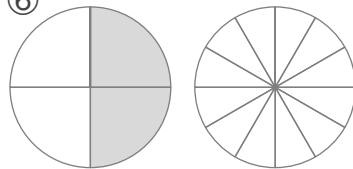
$$\frac{2}{12} = \square$$

⑤



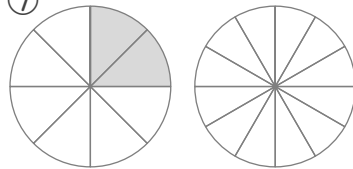
$$\frac{8}{12} = \square$$

⑥



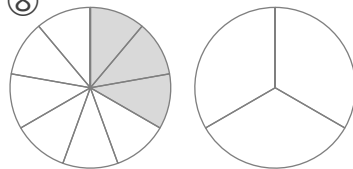
$$\frac{2}{4} = \square$$

⑦



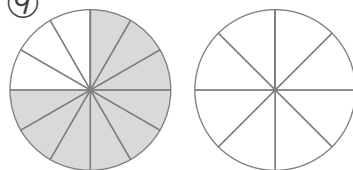
$$\frac{2}{8} = \square$$

⑧



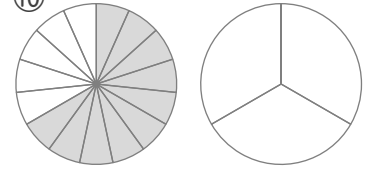
$$\frac{3}{9} = \square$$

⑨



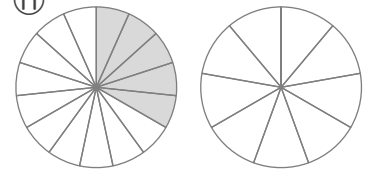
$$\frac{9}{12} = \square$$

⑩



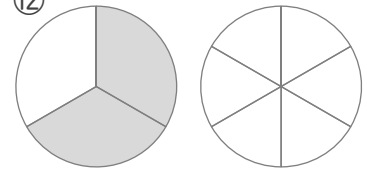
$$\frac{10}{15} = \square$$

⑪



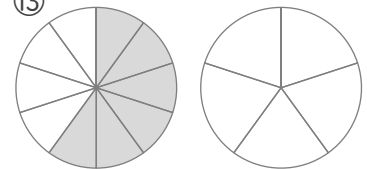
$$\frac{5}{15} = \square$$

⑫



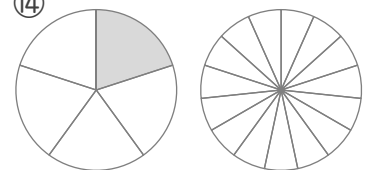
$$\frac{2}{3} = \square$$

⑬



$$\frac{6}{10} = \square$$

⑭



$$\frac{1}{5} = \square$$

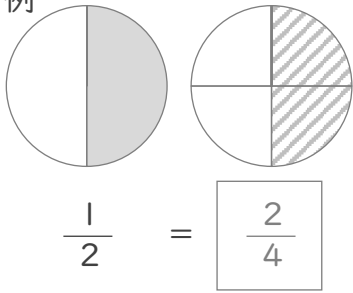
等しい分数

年 組 名前

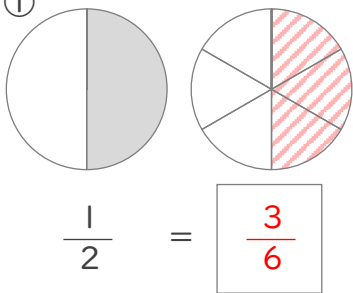
/14

■ 例にならって、左の図と同じだけ右の図に色をぬり、等しい分数を考えましょう。

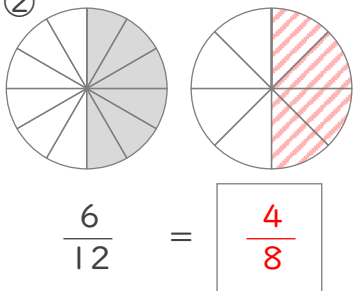
例



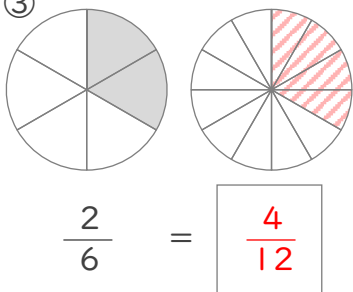
①



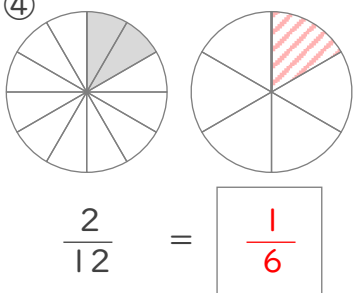
②



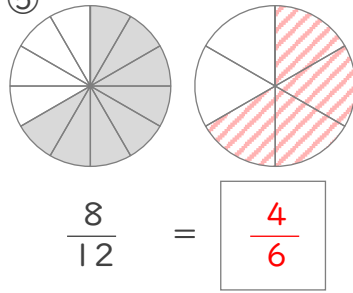
③



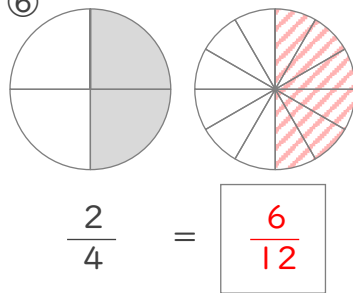
④



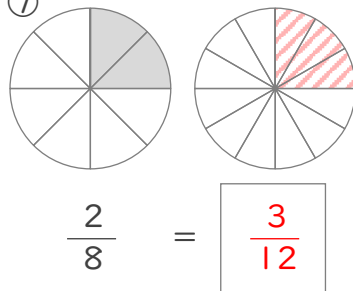
⑤



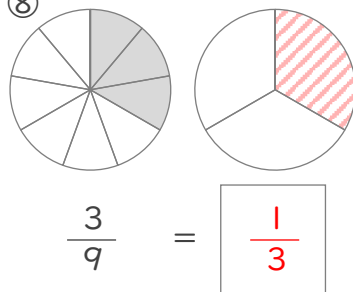
⑥



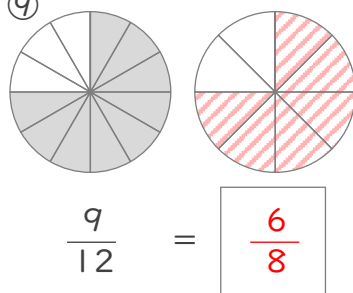
⑦



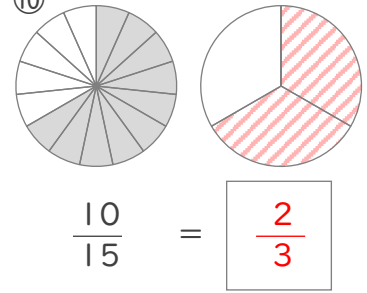
⑧



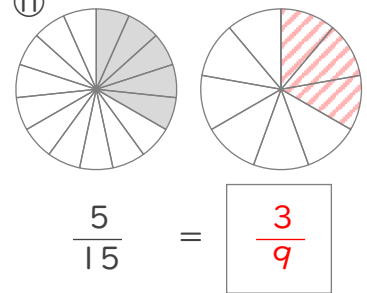
⑨



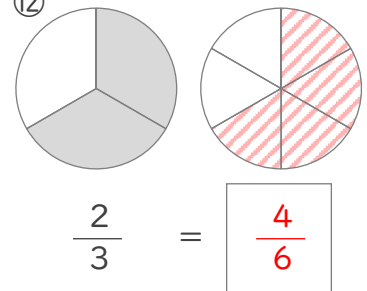
⑩



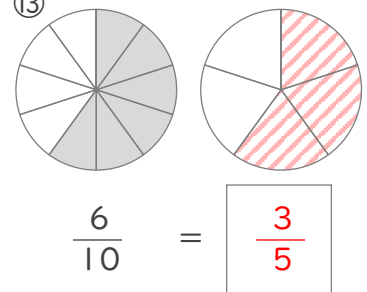
⑪



⑫



⑬



⑭

