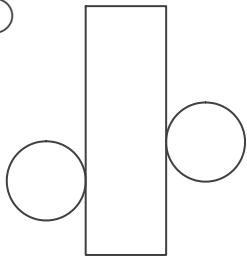
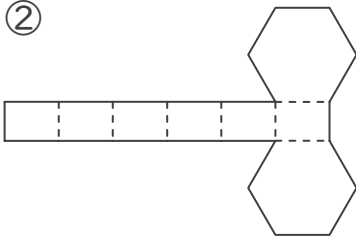


■ 次のてん開図を組み立ててできる立体の名前を答えましょう。

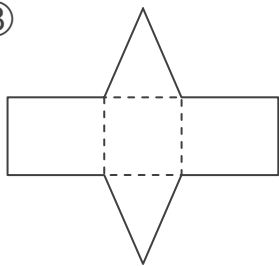
①



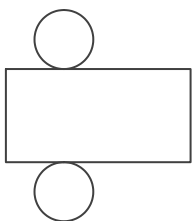

②



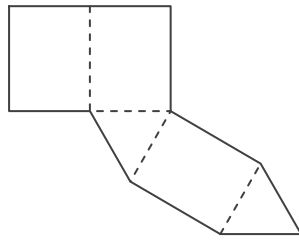

③



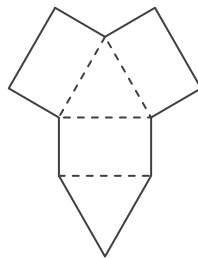

④



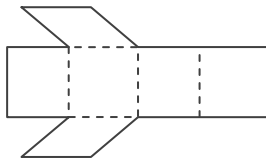

⑤



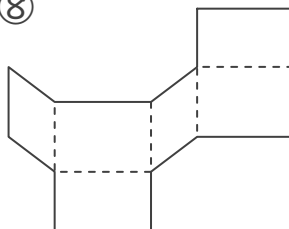

⑥



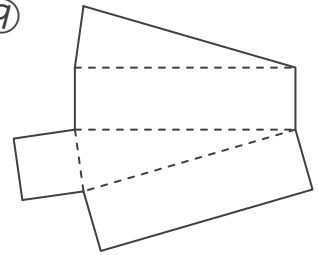

⑦



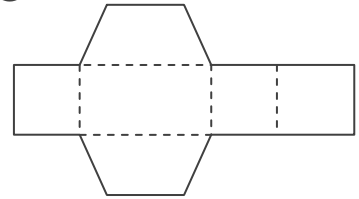

⑧



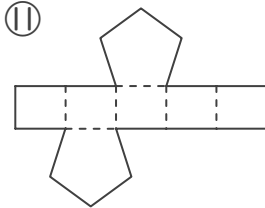

⑨



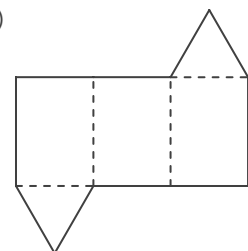

⑩



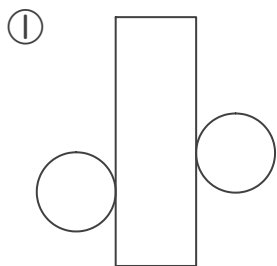

⑪



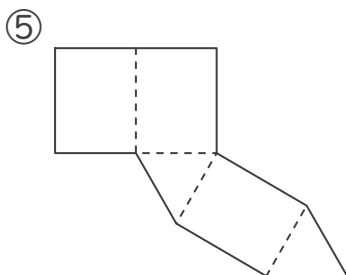

⑫



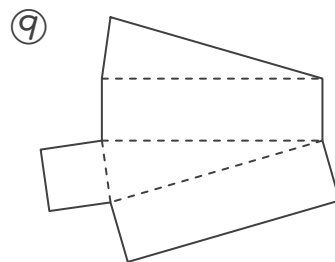
■ 次のてん開図を組み立ててできる立体の名前を答えましょう。



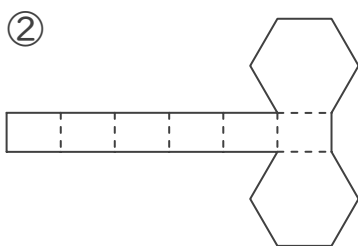
円柱



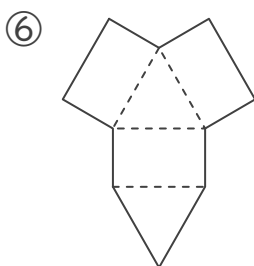
三角柱



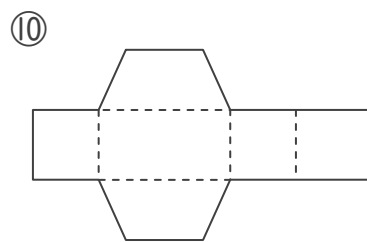
三角柱



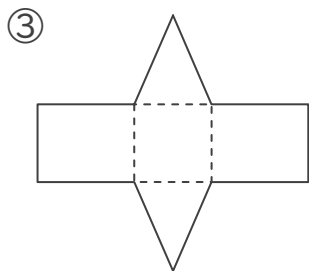
六角柱



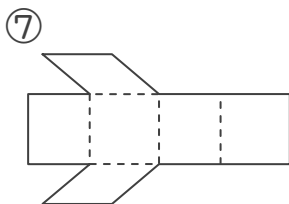
三角柱



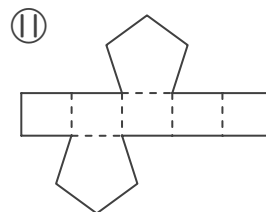
四角柱



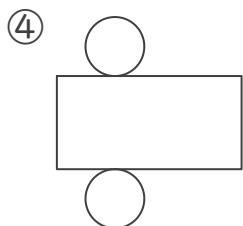
三角柱



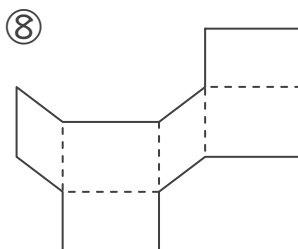
四角柱



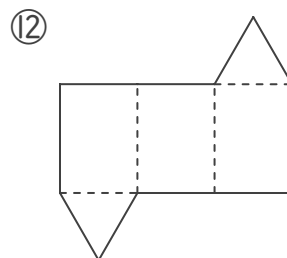
五角柱



円柱



四角柱



三角柱