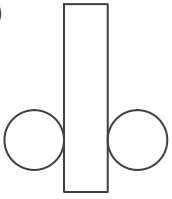
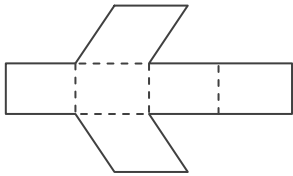


■ 次のてん開図を組み立ててできる立体の名前を答えましょう。

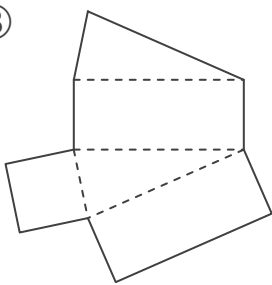
①



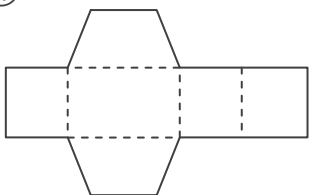
②



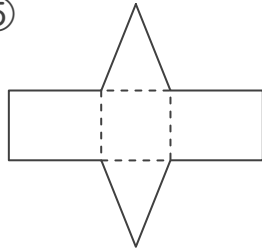
③



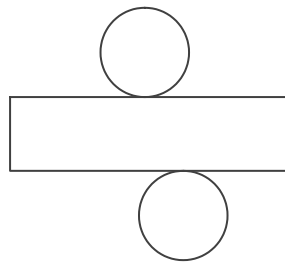
④



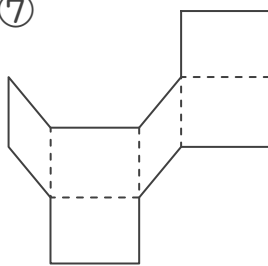
⑤



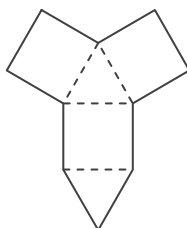
⑥



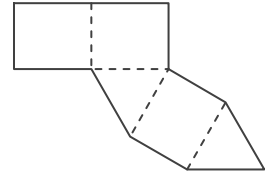
⑦



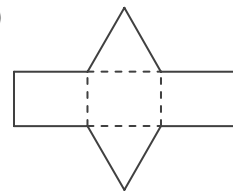
⑧



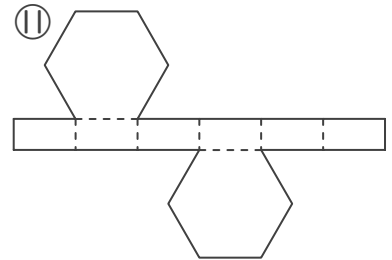
⑨



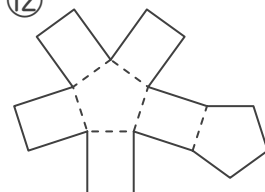
⑩



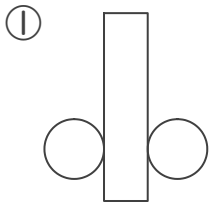
⑪



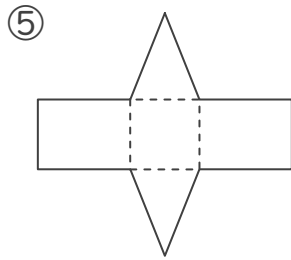
⑫



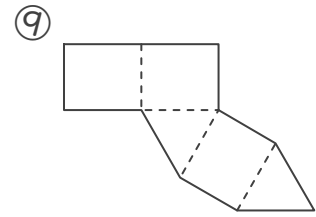
■ 次のてん開図を組み立ててできる立体の名前を答えましょう。



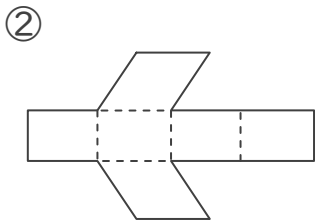
円柱



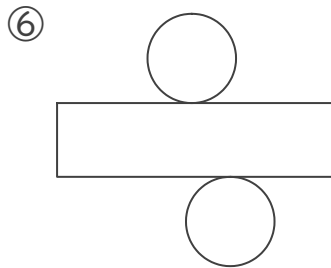
三角柱



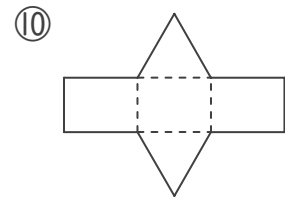
三角柱



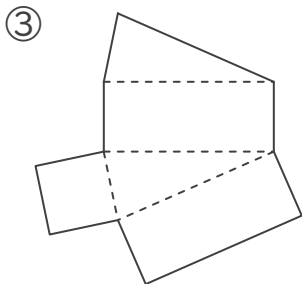
四角柱



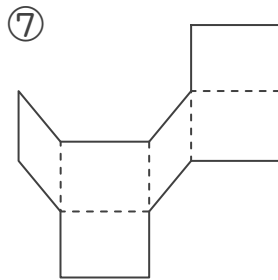
円柱



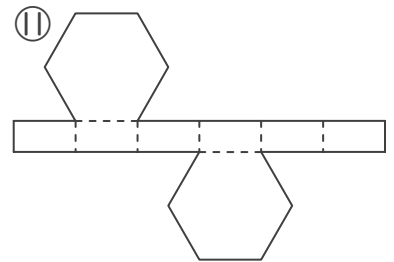
三角柱



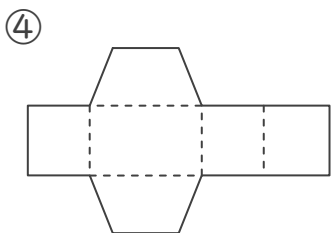
三角柱



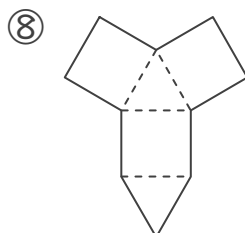
四角柱



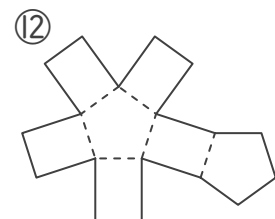
六角柱



四角柱



三角柱



五角柱