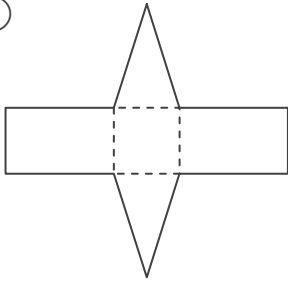
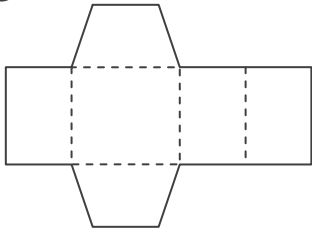


■ 次のてん開図を組み立ててできる立体の名前を答えましょう。

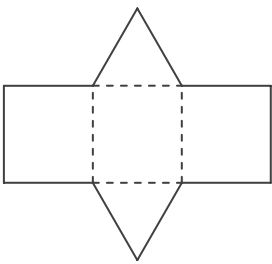
①



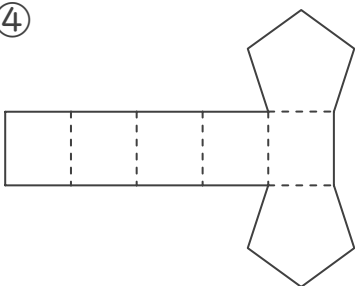

②



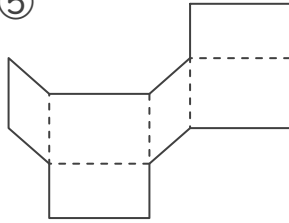

③



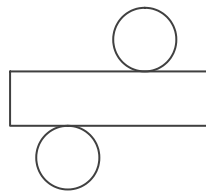

④



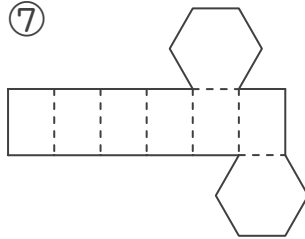

⑤



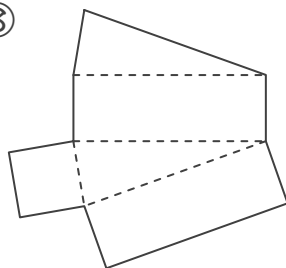

⑥



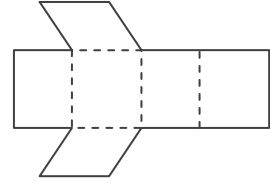

⑦



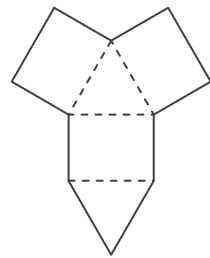

⑧



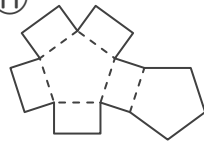

⑨



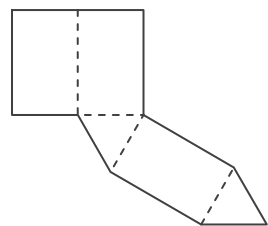

⑩




⑪

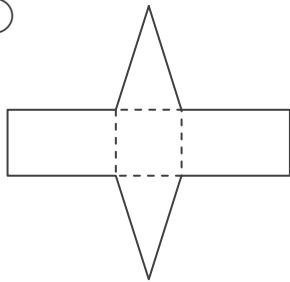



⑫



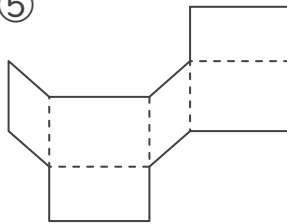
■ 次のてん開図を組み立ててできる立体の名前を答えましょう。

①



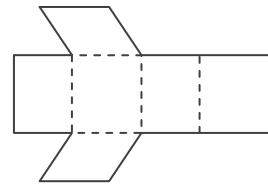
三角柱

⑤



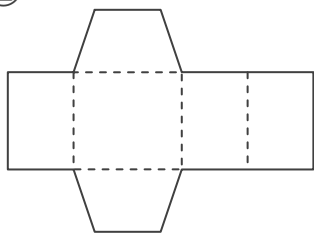
四角柱

⑨



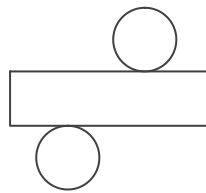
四角柱

②



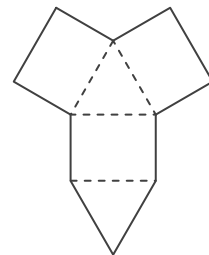
四角柱

⑥



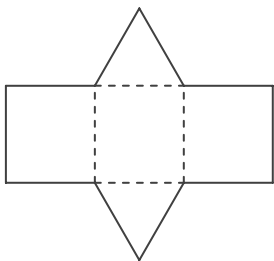
円柱

⑩



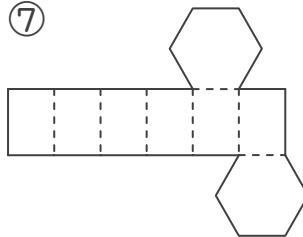
三角柱

③



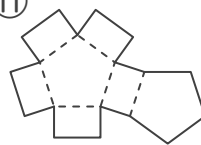
三角柱

⑦



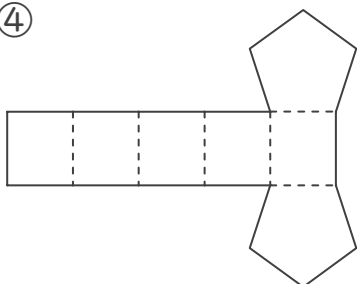
六角柱

⑪



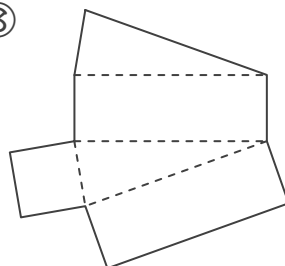
五角柱

④



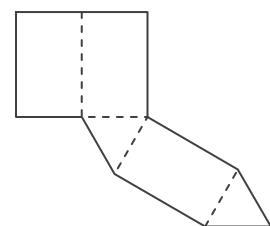
五角柱

⑧



三角柱

⑫



三角柱